

# Alternative Programming Data Report 05/06

Prepared by Nicol M. Moreland, Ph.D. and Daniel J. Torres

## Table of Graph Contents

- Figure 1. Community Custody Clients (CCP) Served by Fiscal Year**
- Figure 2. Overall Client Activity for CCP**
- Figure 3. CCP Referral Source**
- Figure 4. Top Offenses Coming into CCP**
- Figure 5. Top 4 Charges into CCP for Females**
- Figure 6. Top 4 Charges into CCP for Males**
- Figure 7. Community Custody Success Rates Across Fiscal Year**
- Figure 8. Female CCP Program Outcome by Ethnicity**
- Figure 9. Male CCP Program Outcome**
- Figure 10. Hispanic Male Success by Crime Code**
- Figure 11. Caucasian Male Success by Crime Code**
- Figure 12. African American Male Success by Crime Code**
- Figure 13. Native American Male Success by Crime Code**
- Figure 14. Males Receiving Warrants while enrolled in CCP**
- Figure 15. Males Receiving a New Offense While Enrolled in CCP**
- Figure 16. Males Reported as Non-Compliant While Enrolled in CCP (Unsuccessful)**
- Figure 17. Hispanic Female Success by Crime Code**
- Figure 18. Caucasian Female Success by Crime Code**
- Figure 19. African American Female Success by Crime Code**
- Figure 20. Native American Female Success by Crime Code**
- Figure 21. Females Receiving a Warrant While Enrolled in CCP**
- Figure 22. Youth Reporting Center (YRC) Clients by Fiscal Year**
- Figure 23. YRC Overall Client Activity**
- Figure 24. Referral Source for YRC 05/06**
- Figure 25. Top 3 Incoming Offenses for YRC 05/06**
- Figure 26. Top Charges (Most Serious) into YRC by Gender**
- Figure 27. YRC Program Outcome**
- Figure 28. YRC Program Outcome by Gender**
- Figure 29. YRC Program Outcome by Ethnicity**
- Figure 30. Mental Health Clients Across Fiscal Year**
- Figure 31. Mental Health Clinic Service Activity for 05/06 (as of June 15<sup>th</sup>)**
- Figure 32. Gender Make-Up**
- Figure 33. Ethnic Distribution for MHC**
- Figure 34. Success versus Unsuccessful by Crime Code**
- Figure 35. Female Success versus Unsuccessful by Crime Code 05/06 (as of June 15<sup>th</sup>)**
- Figure 36. Male Success versus Unsuccessful by Crime Code 05/06 (as of June 15<sup>th</sup>)**
- Figure 37. Top 4 Reasons for Youth Being Unsuccessful**
- Figure 38. Mental Health Center Billables by Fiscal Year**
- Figure 39. MHC 06 Fiscal Earnings**

## Alternative Programming at BCJDC

Our Alternative programs have not significantly changed from 04/05 with respect to descriptive client activity and outcome measures. We continue to make an effort to increase the female eligibility and a more diversified ethnic standing. Please find below descriptive client activity for 05/06. Probation violation reasons will be available in the 2<sup>nd</sup> quarter of 06/07. Much progress has been made in compiling data in the MIS for YRC and CCP.

Definitions for being Successful and Non-Successful for CCP & YRC only:

Below you will find a number of graphs measuring program outcome on a number of different levels. When the term “success” is being used to measure “outcome” it means that a client did not come back into custody with a new charge or new referral for crimes against other persons, or a property crime. The client could have received a new warrant for probation violation, technical or otherwise. As long as CCP and YRC was able to monitor the client without that client committing a new offense and completing the requirements for CCP and YRC we count that client as being successful.

### Community Custody Program

Figure 1.

#### Community Custody Clients Served by Fiscal Year

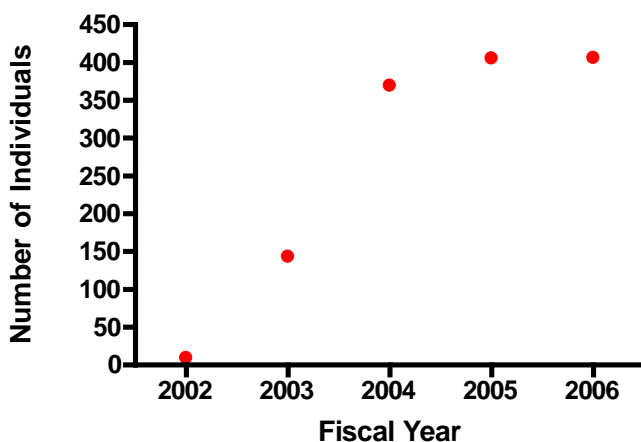


Figure 2.

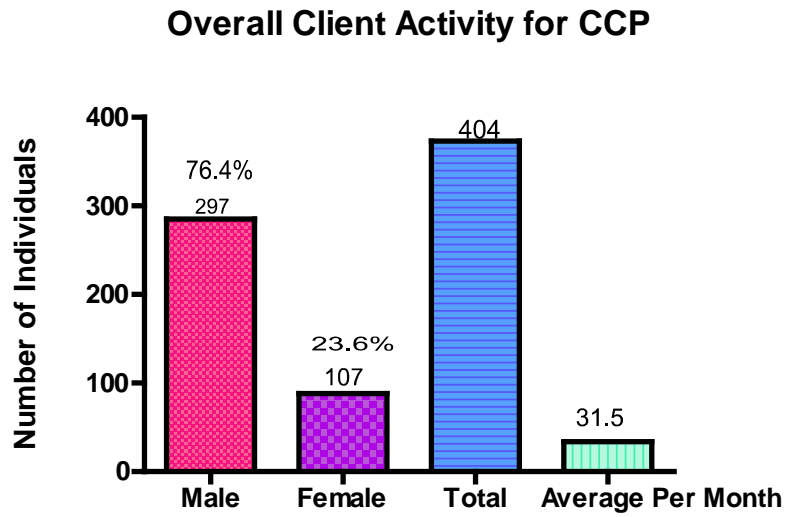


Figure 3.

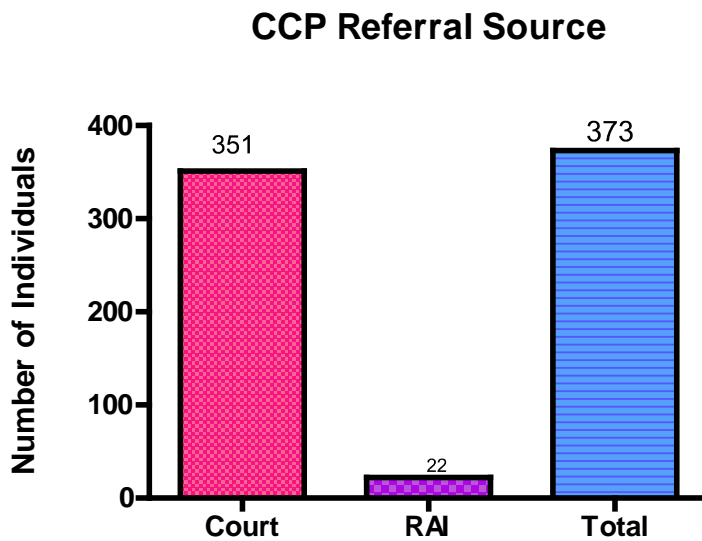


Figure 4.

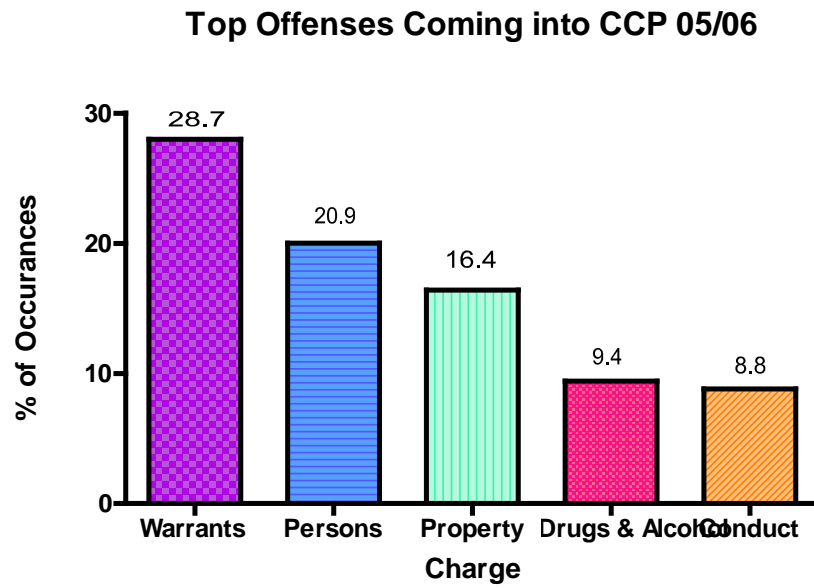


Figure 5.

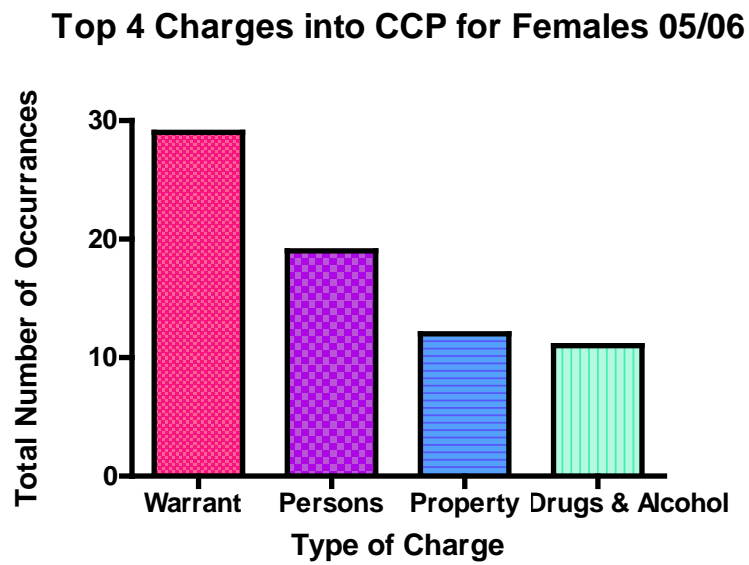


Figure 6.

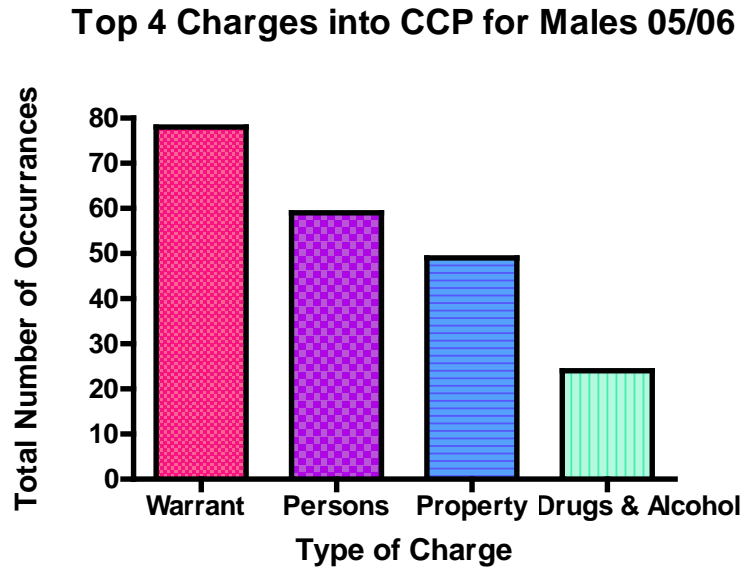


Figure 7.

### Community Custody Success Rates Across Fiscal Year

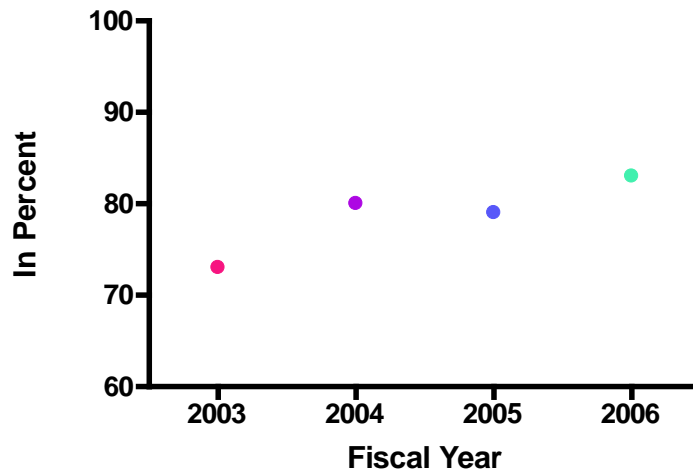


Figure 8.

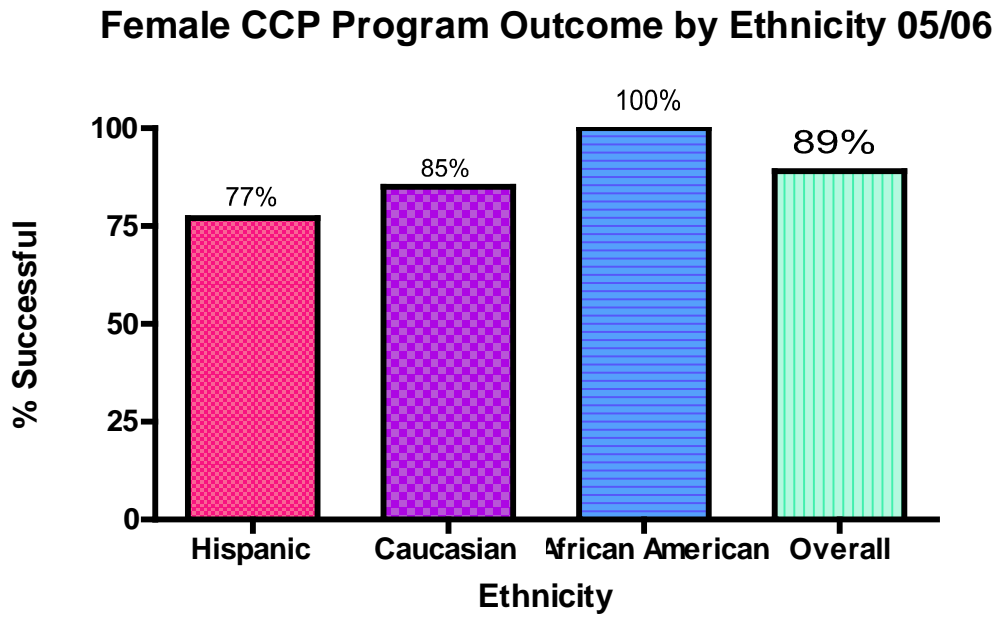
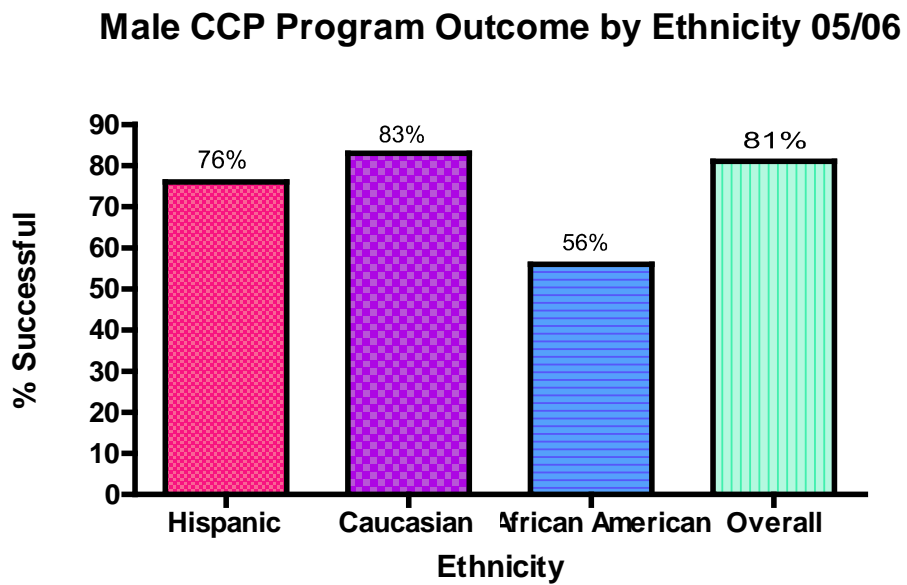


Figure 9.



## Profiling a Successful Client in CCP & YRC

The next series of graphs has taken the data and re-packaged it to reflect what type of individual, for a given crime, is most successful in CCP. Above, the top charges were reported for CCP. The following graphs reflect and include all types of charges for clients coming into CCP. For the following, the percentages above the bar reflect success of the total number considered represented on the bar. For example, of the 16 Individuals discharged from CCP for a Conduct Charge 75% was monitored successfully without a new referral/charge. The number one reason CCP reported for not being successful was youth having a warrant placed for their arrest. The type of warrant is not available to CCP managers in MIS. We plan to add different levels of warrants so persons entering data in CCP can select a specific type of warrant. Male identification in programs is featured first than females follow.

Figure 10.

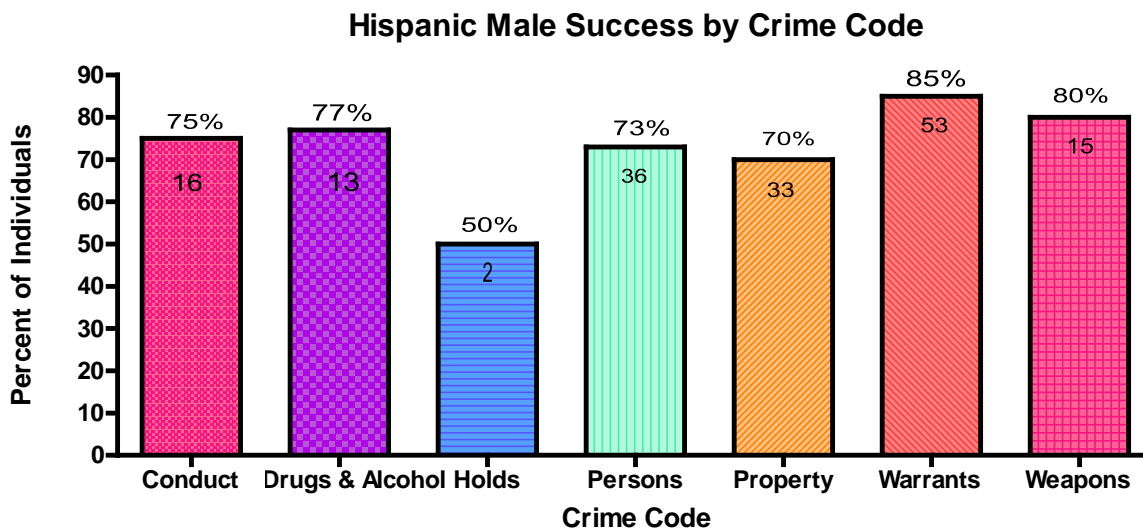


Figure 11.

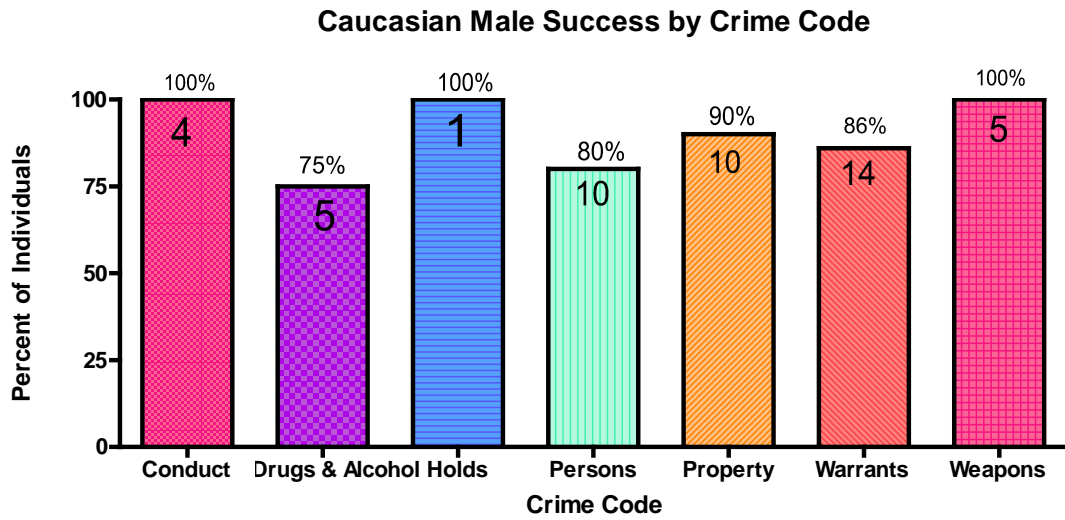


Figure 12.

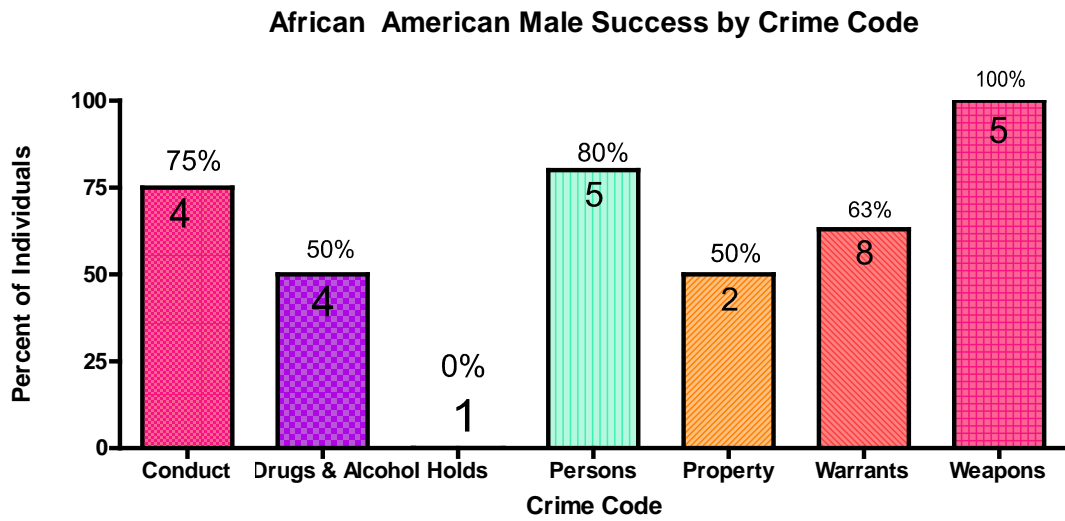


Figure 13.

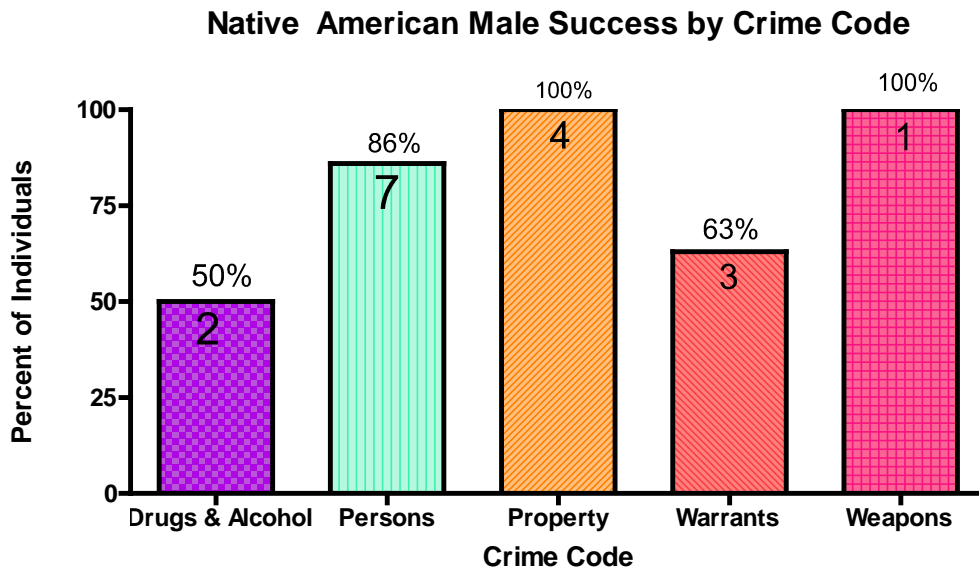
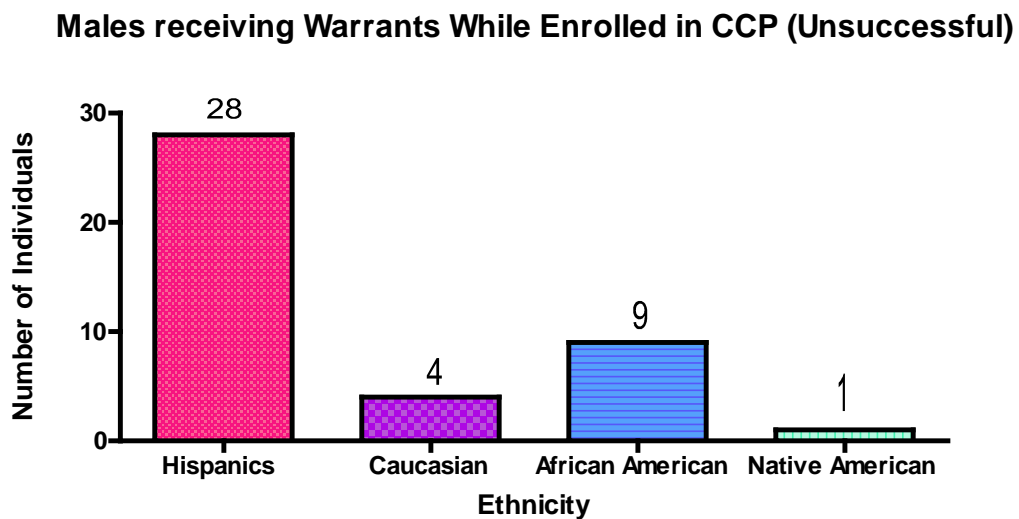


Figure 14.



CCP reported 11 individuals as successful who also received a warrant while enrolled in CCP.

Figure 15.

**Males receiving a New Offense While Enrolled in CCP (Unsuccessful)**

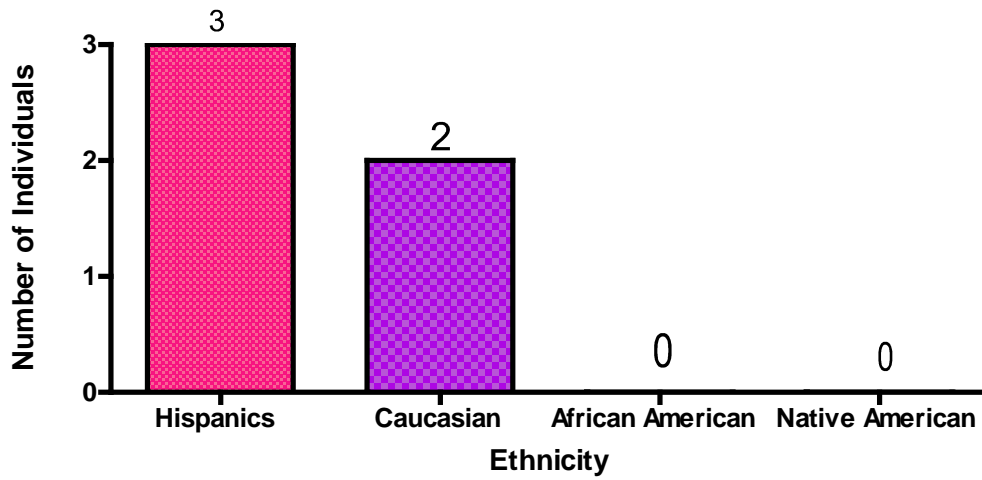


Figure 16.

**Males Reported as Non-Compliant While Enrolled in CCP (Unsuccessful)**

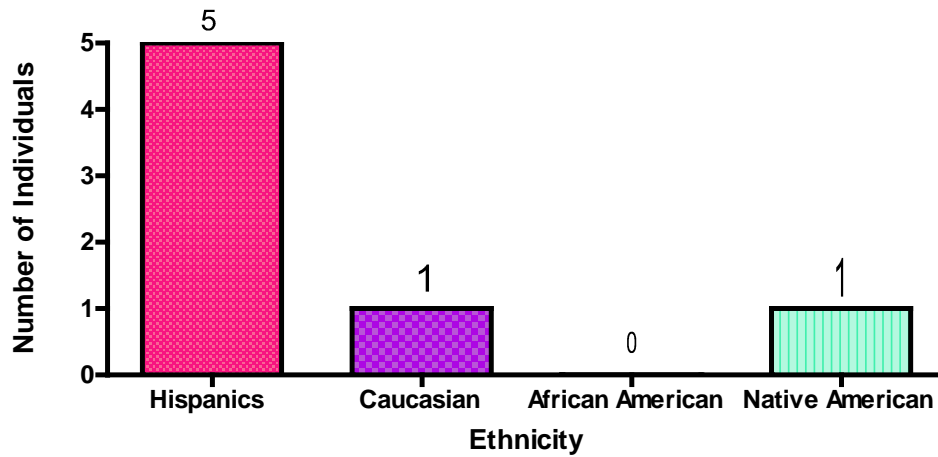


Figure 17.

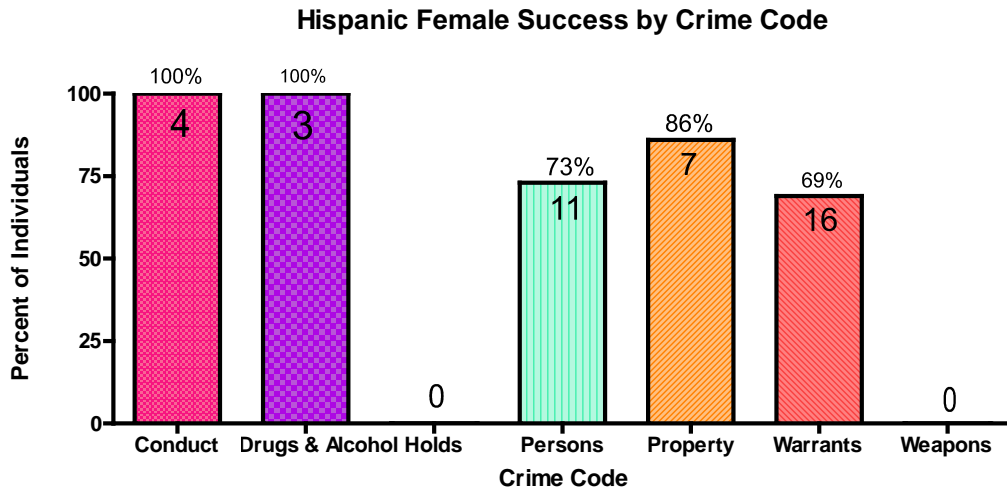


Figure 18.

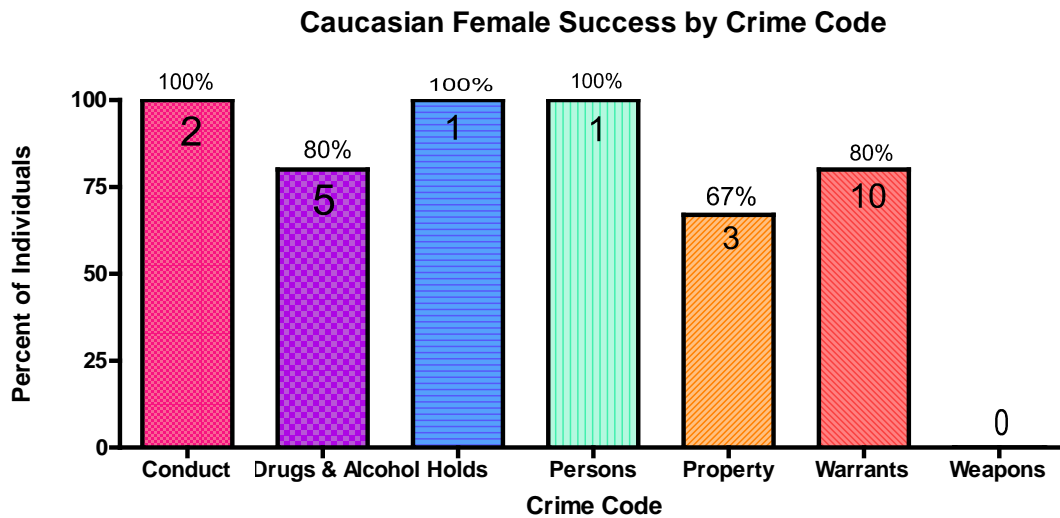


Figure 19.

### African American Female Success by Crime Code

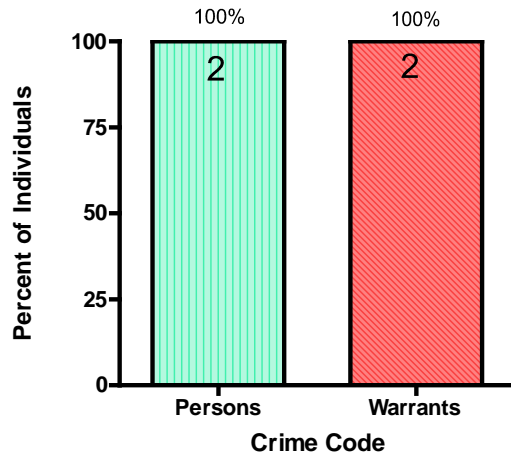


Figure 20.

### Native American Female Success by Crime Code

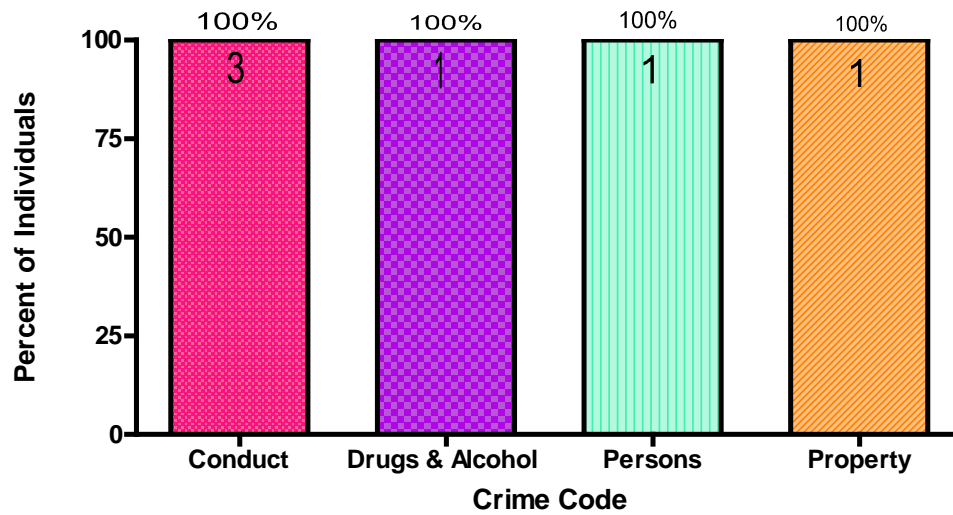
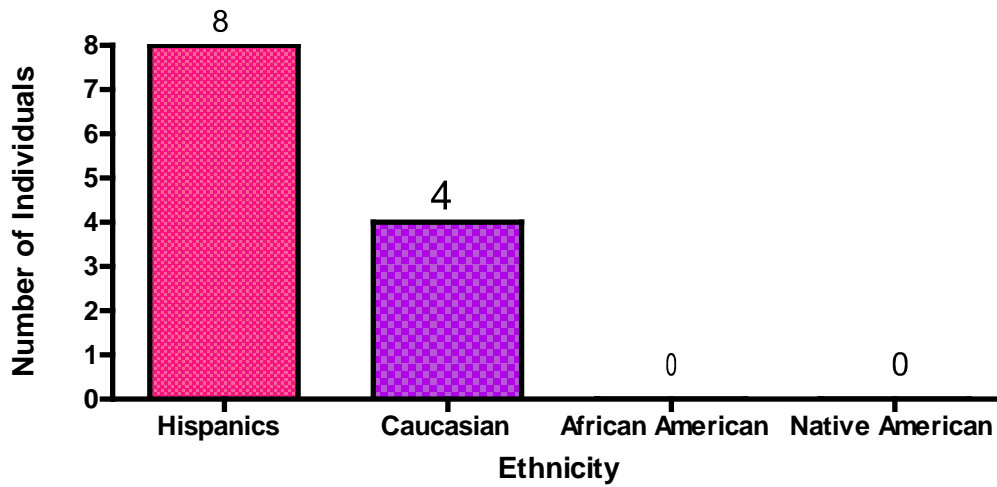


Figure 21.

### Females Receiving a Warrant While Enrolled in CCP (Unsuccessful)



Females who are referred to CCP with FTA Warrants are very successful in showing up for their next court date.

## Youth Reporting Program

Figure 22.

Youth Reporting Center (YRC) Clients by Fiscal Year

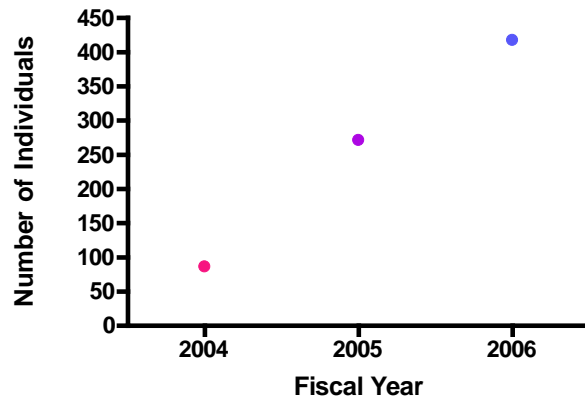


Figure 23.

YRC Overall Client Activity 05/06

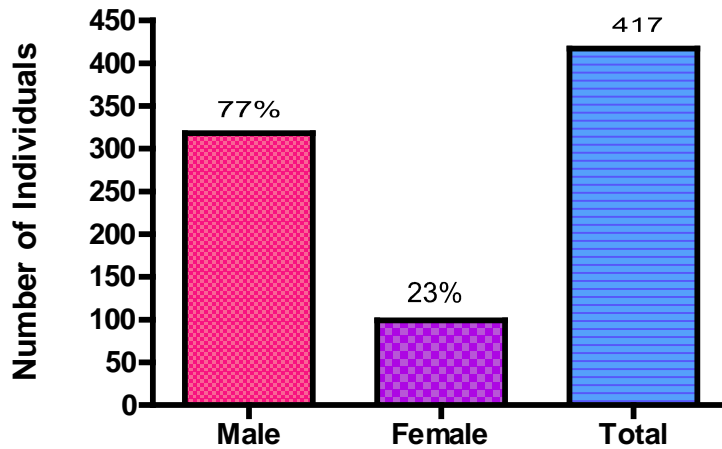
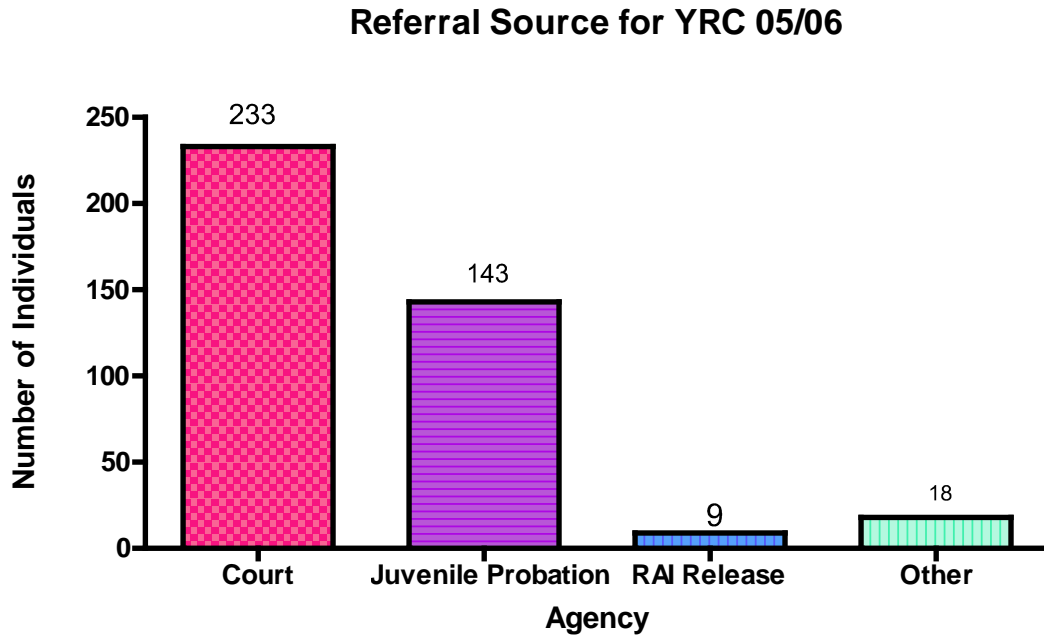


Figure 24.



Referral not listed for 18 cases.

Figure 25.

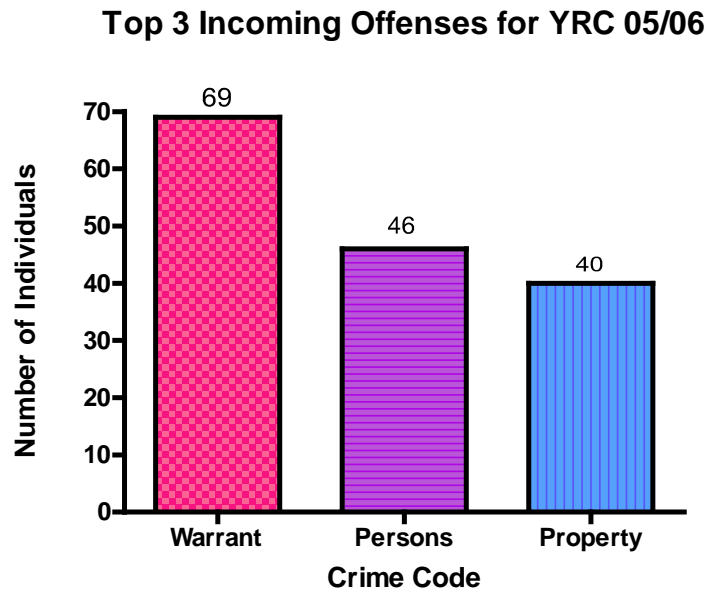


Figure 26.

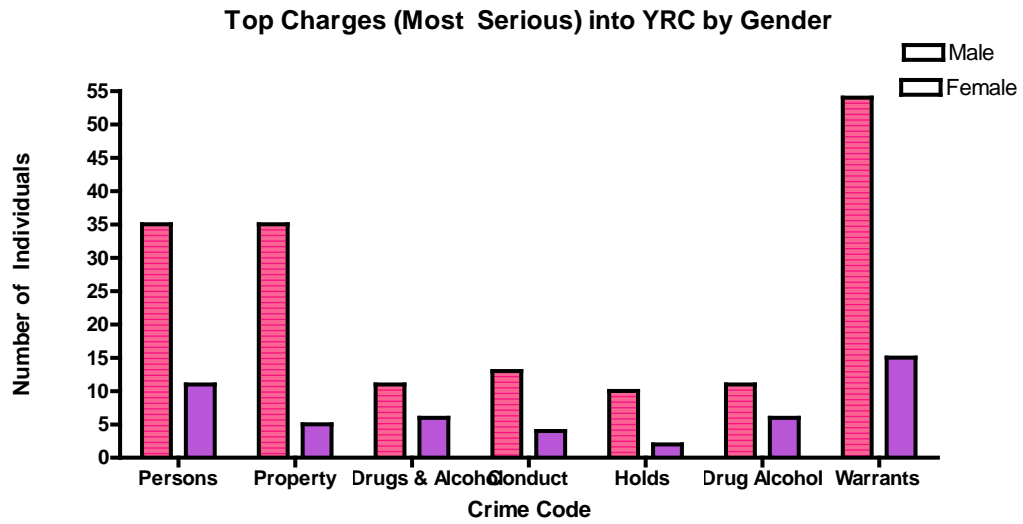


Figure 27.

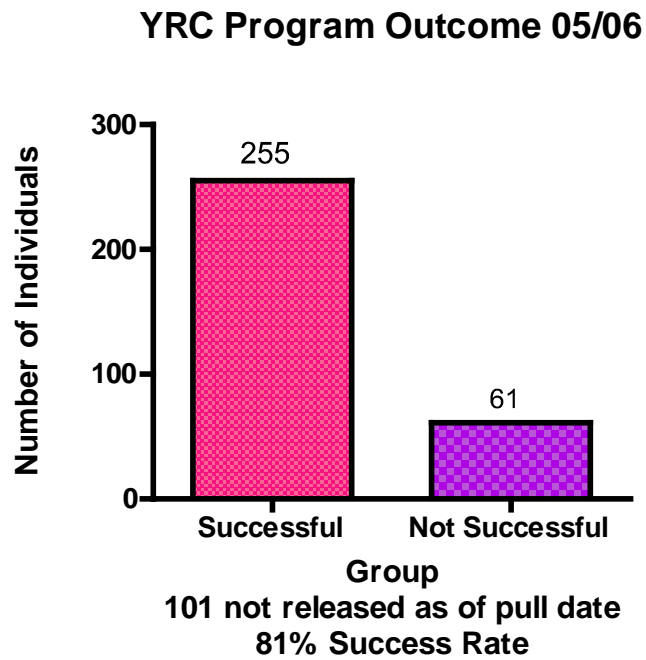


Figure 28.

### YRC Program Outcome by Gender 05/06

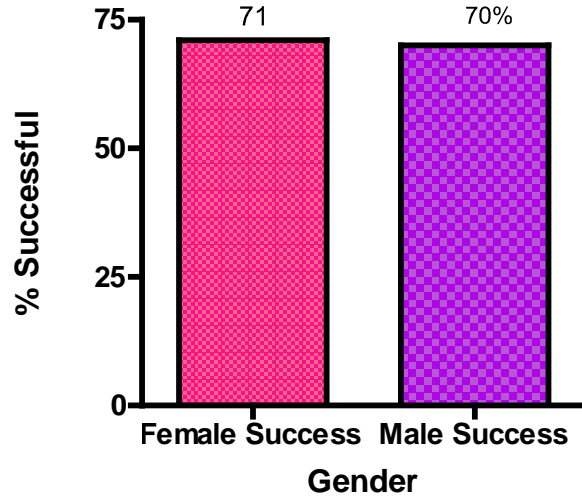
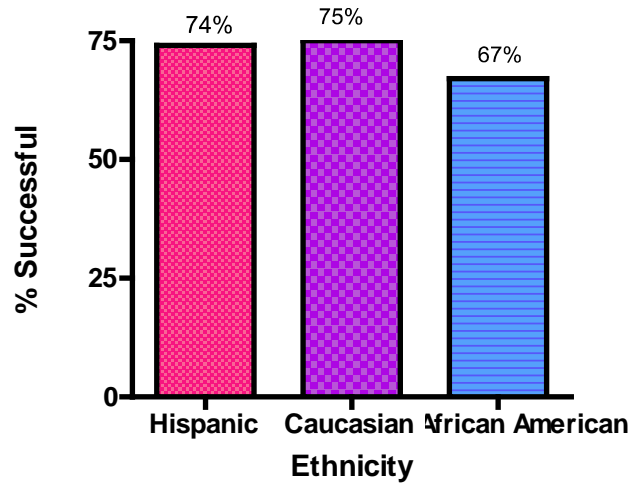


Figure 29.

### YRC Program Outcome by Ethnicity 05/06



### Mental Health Center (MHC)

Mental Health Data is still being compiled in our MIS. Progress has been made. Please find descriptive information regarding client activity below. Significance tests should be ready for the 2<sup>nd</sup> quarter in 06/07.

Definition for “Success” for MHC: When reporting success for MHC the outcome speaks directly to those clients completing treatment conditions with the mental health clinic. Success does not mean that clients did not come back into custody. First, it was important to measure if clients were using the mental health clinic that was referred from detention. Second, and more importantly, we want to measure if mental health treatment has a significant impact on client recidivism rates. In other words, does mental health problems precipitate crime and if that mental health problem is addressed does this impact recidivism rates for youth. These significance tests will be available in the 2<sup>nd</sup> quarter 06/07 data report.

Figure 30.

### Mental Health Clients (MHC) Across Fiscal Year

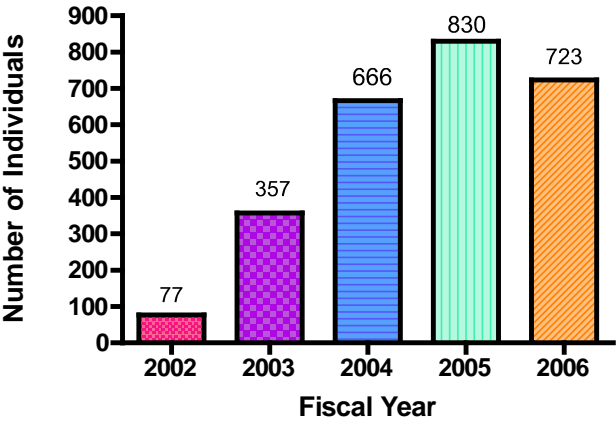


Figure 31.

### Mental Health Clinic Service Activity for 05/06 (as of June 15th)

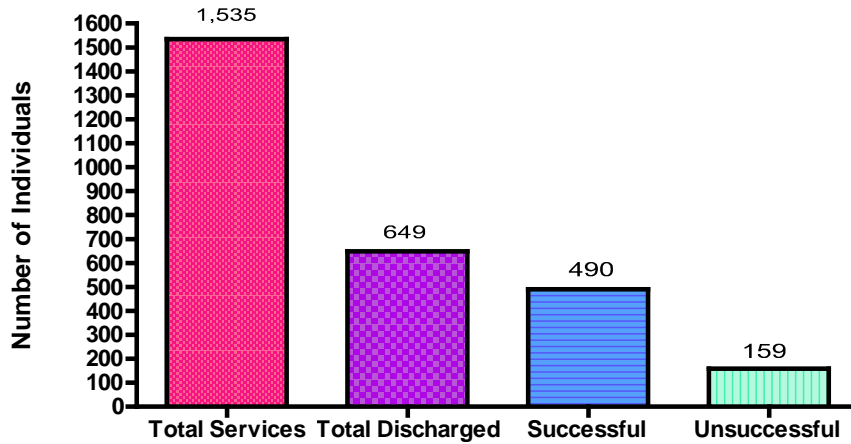


Figure 32.

### Gender Make-Up Mental Health Clinic 05/06

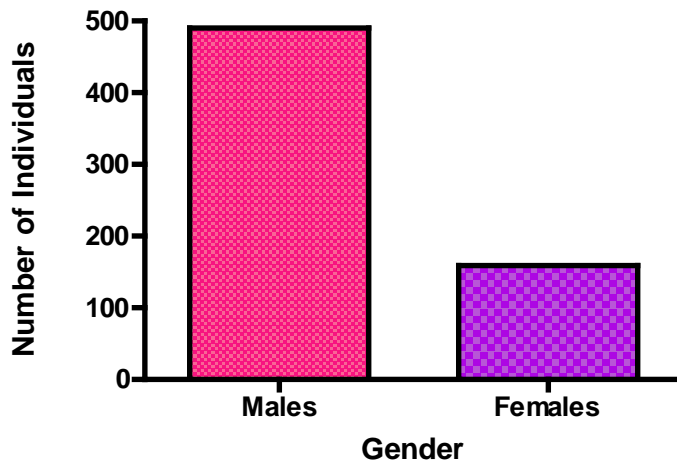


Figure 33.

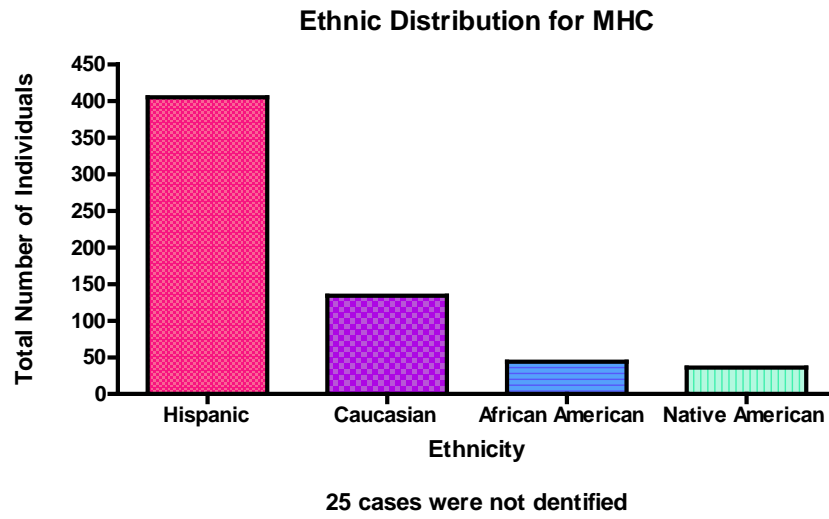


Figure 34.

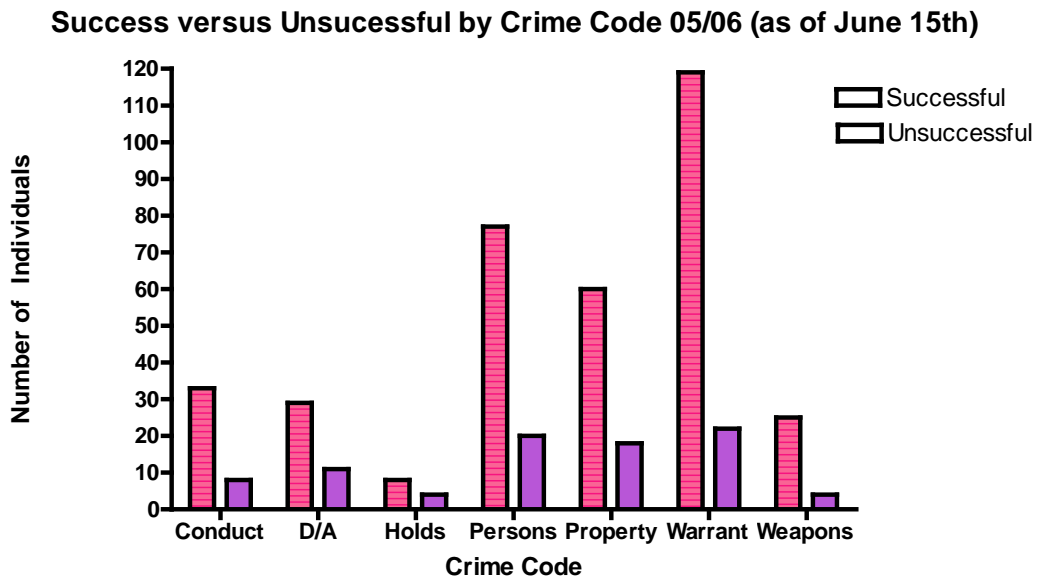


Figure 35.

**Female Success versus Unsuccessful by Crime Code 05/06 (as of June 15th)**

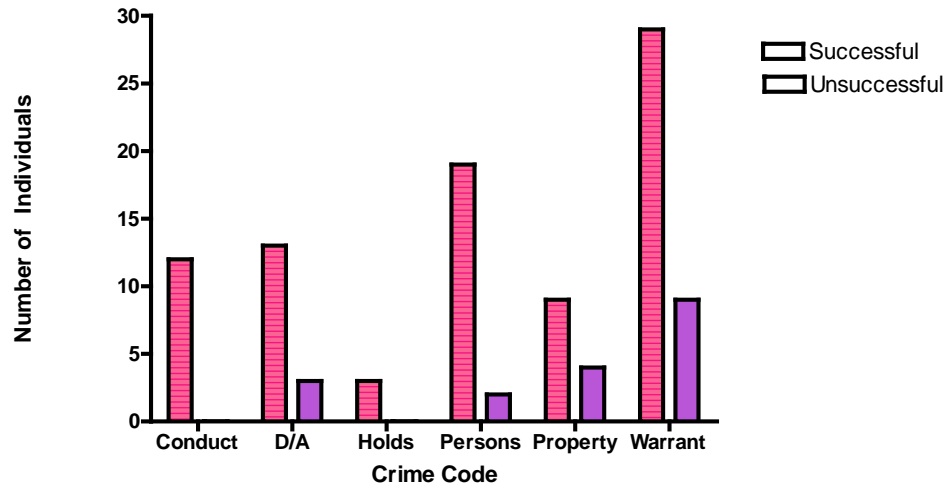


Figure 36.

**Male Success versus Unsuccessful by Crime Code 05/06 (as of June 15th)**



Figure 37.

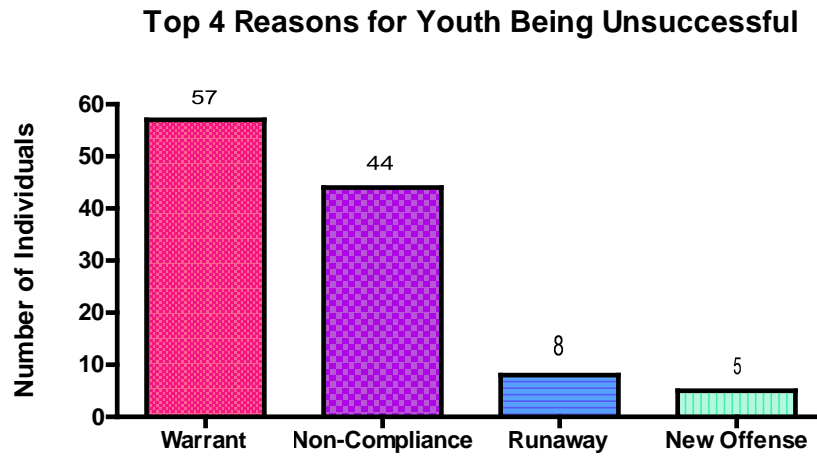


Figure 38.

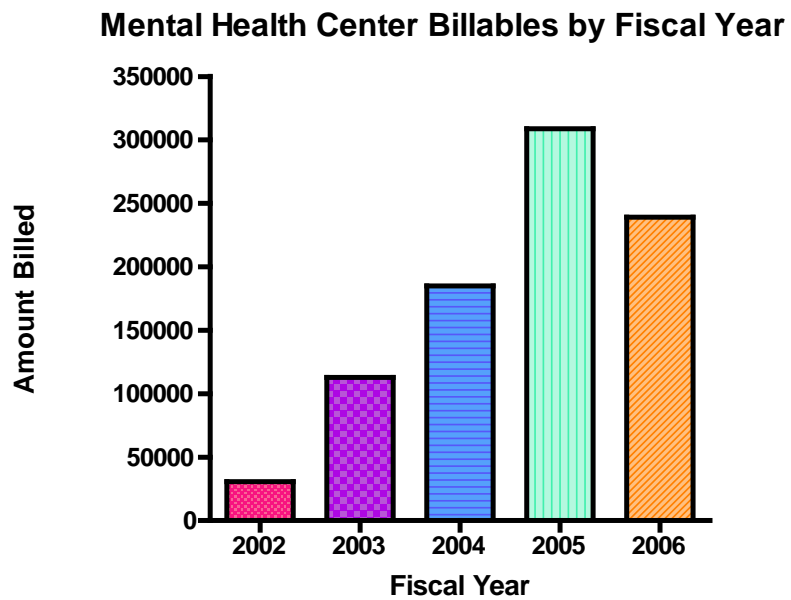
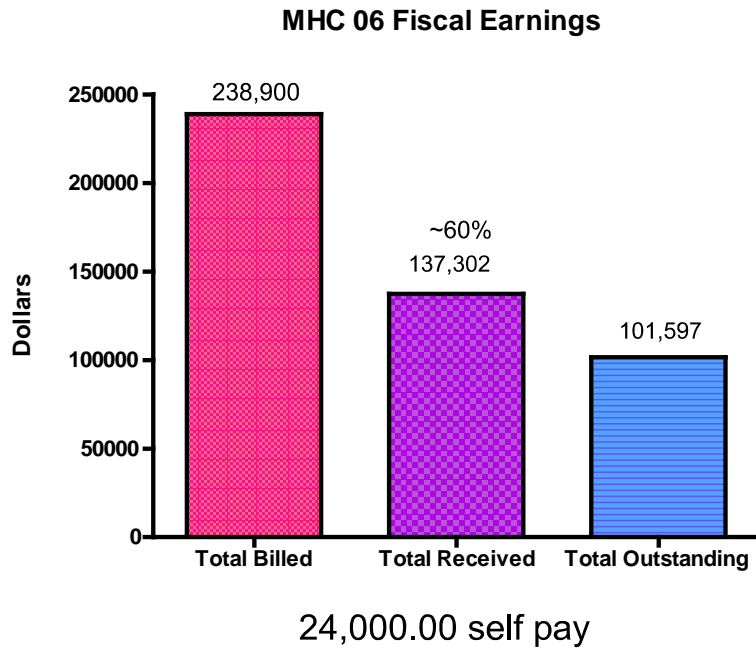


Figure 39.



## Summary

Ethnicity does not appear to be a variable in the variance accounted for success. However, being female does increase the probability that one will be successful in CCP. Characteristics that may be unique to being “female” influence scores. We measured and controlled for type of crime and made comparisons between males and females to see if this influenced success rates and it did not. In other words, there was not a significant difference in incoming offenses between males and females and overall females still perform better in alternative programming.

Crime committed seems to account for the greatest proportion of variance when measuring outcome for alternative clients, overall. We have not measured number of previous referrals and how this may impact one being successful or not in alternative programming. Recidivism rates for males and females may be a variable of interest here for knowing who makes a successful client. The disproportionate minority contact report for 05/06 lists recidivism by ethnicity and it was found that there are a disproportionate amount of minorities re-offending and coming back to BCJDC. We should look at this from a gender perspective to investigate if recidivism rates impact not only DMC but also gender.

### RAI and 8-11 Referrals to Alternative Programming:

This past fiscal year we have observed an increase (4 to 22) in the number of referrals made by the RAI to alternative programs. We expect that this number will continue to increase as year’s progress. This referral type will also be included in future DMC and Gender initiative reports. It is always interesting to know how our standardized tools are impacting DMC and gender.

### A Client's Success or Failure in Alternative Programs:

Gender and Most Serious referral reason into CCP and YRC are best predictors of Success for these programs. Above, both programs are observed with very high success rates for female clients, overall. Ethnicity plays a small role (or accounts for a small proportion of variance) in successful outcomes for females. Again, there is something unique about being female that is providing a successful outcome for these individuals. We again measured if there was a significant difference in referral offense between males and females and there was not. Specifically, the one population who is feature in this years fiscal data report as being "the" over-represented group is the most successful group in alternative programming, African American. However, the females fair much better than African American males in CCP. What is different between male and female African Americans? One difference is referral offense into CCP. Females were referred on Warrant and Person Charges where males were more often referred on Warrants, Person, Drugs and Alcohol, and Conduct charges. So given the chance, if you will, female African Americans may be equivalent to males if they were referred at the same rate as males for the same charges. This we will not know and cannot measure until these numbers in these groups increase.

CCP and YRC plan to develop separate programs for females as a result of a Steering Committee meeting where it was discussed that Judges refrain from mixing girls and boys in the same program. Next year we should measure percent increases in the referrals to CCP and YRC to see if this makes a difference. It is probable that having additional programming for girls will have a difference in number of individuals made eligible for CCP & YRC.

**A caution** is to refrain from making absolute decisions about success when comparing males and females in alternative programs. Female numbers are very small and this makes it very difficult to predict success rates for these groups. Once, Gender specific programming gets started we will have a more accurate analysis to report.