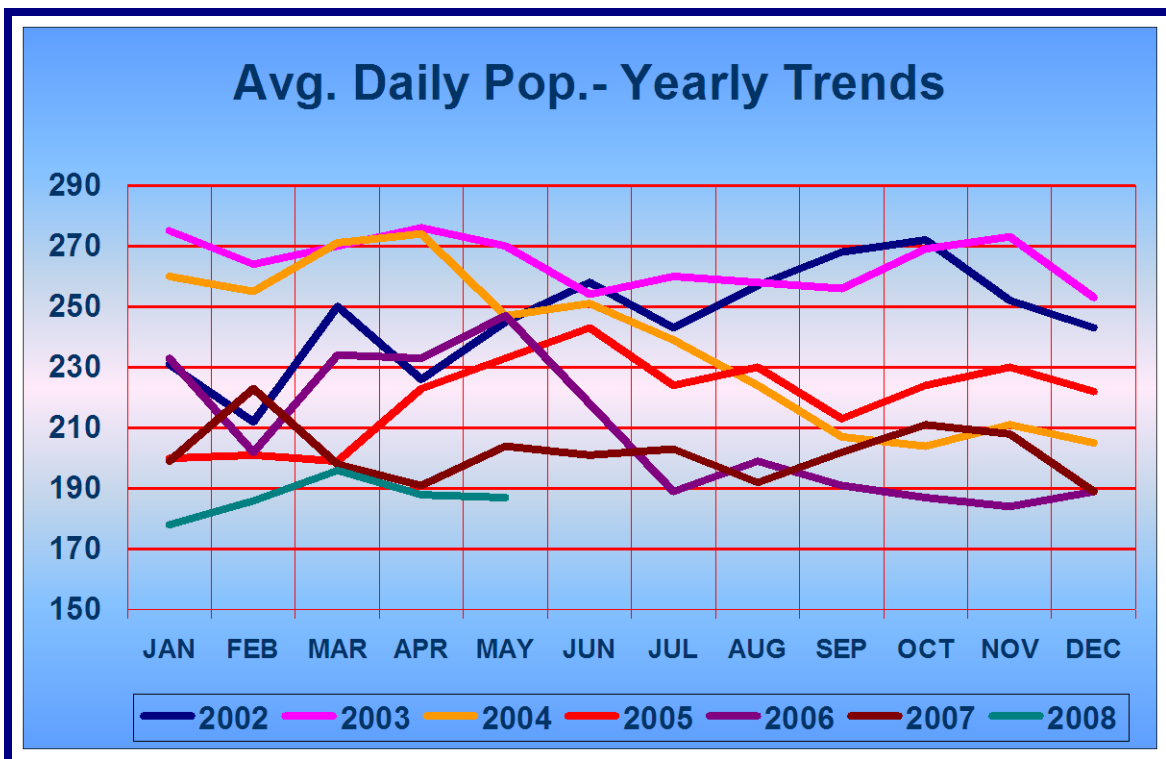


In a break from monthly trends identified over the last six years, wherein there has been a well-established reduction in referrals in April, this year that same month experienced an increase of 80 referrals over last year's total of 862. Incidentally, the May peak trend was maintained with a total of 953, 25 shy of last year's high.



At the same time that referrals were experiencing an unprecedented increase, the Avg. Daily Population in Detention maintained at 192 for April, decreasing by two the following month in contrast to an increase in ADP of 12 for the same period last year.