


A Graduated System of
Incentives, Interventions, and Sanctions
for Youth Offenders on Probation
- A Case Management Approach –



Central and Eastern Oregon Juvenile Justice
Consortium

<http://www.jdaihelpdesk.org/Docs/Documents/ProbationModelJune08.pdf>

Data behind Decisions – Wasco County

During the period of 2006 to 2008 Detention admissions decreased 35%, however the percentage of admissions for PV's has remained static.

- 2006 23% Probation Violations (technical)
- 2007 36% Probation Violations (technical)
- 2008 28% Probation Violations (technical)

1/4 of all admissions to detention based on non-criminal conduct of youth.

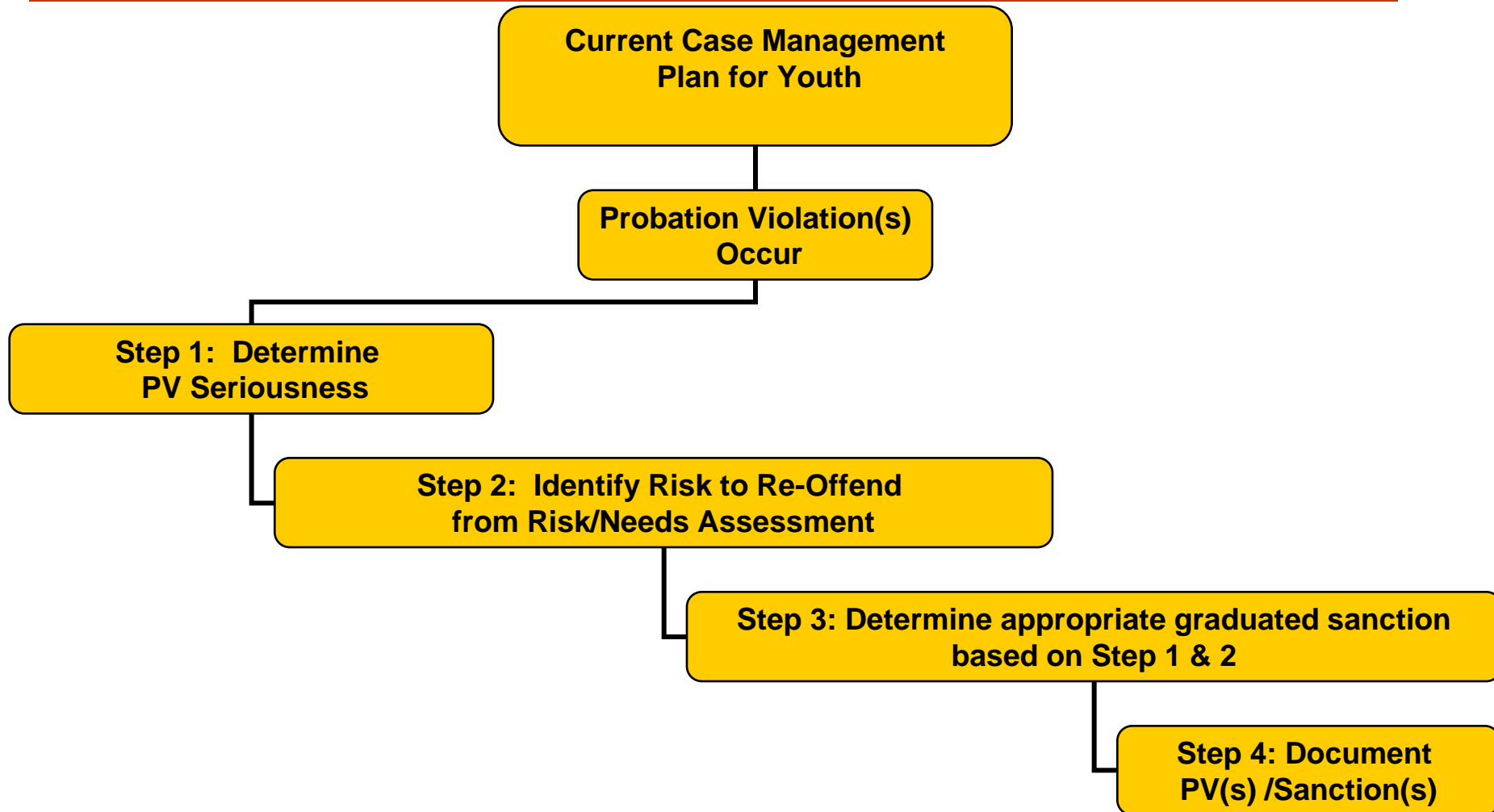
Basic Components

- ❑ There must be a collaborative agreement with the Court system and probation;
- ❑ Not all interactions with youth offenders are equal or static – circumstances change over time;
- ❑ Case plans should be based on a validated risk/needs assessment instrument ;

Basic Components

- ❑ Strategies and interventions should be tailored to risks the youth presents to the community;
- ❑ Positive reinforcements are more powerful than sanctions;
- ❑ A continuum of incentives and sanctions must be in place to individualize the responses to probation violations;

Handling Probation Violations: A Four-Step Process



Step 1 – Determine the Seriousness of the Probation Violation

- ❑ Minor Violations (Short Duration, minimal impact)
- ❑ Moderate (Pattern of Behavior, similar to underlying offense)
- ❑ Serious (Chronic pattern of behavior, repeated failure)
- ❑ Considerations include:
 - Victim impact,
 - Community impact,
 - Underlying offense,
 - Frequency
 - Duration, and
 - Compliance with Conditions of Probation

Step 2 – Risk to Re-Offend and the Case Management Plan

- ❑ Moderate to High risk probation violations indicate an opportunity to re-assess the risk/needs of the youth.
- ❑ Evaluation of Supervision Level and effectiveness of monitoring the case management plan.

Step 3 – Graduated Sanctions for Probation Violations

□ Seriousness of the violation

+

□ Level of Risk to re-offend

=

□ Individualized response to probation violation

Step 4 – Documentation of Probation Violations and Sanctions

□ Probation Violation Report

- Description of Violation
- History of Prior Sanctions
- Evaluation of “Overall” performance (Including progress and strengths)
- Assessment of Seriousness of Violation and level of risk to re-offend
- Recommendations

Contact Information

- Molly Rogers, Director
Wasco County Youth Services
mollyr@co.wasco.or.us

- Jeff Milligan, Project Coordinator
CEOJJC
milligan50@msn.com