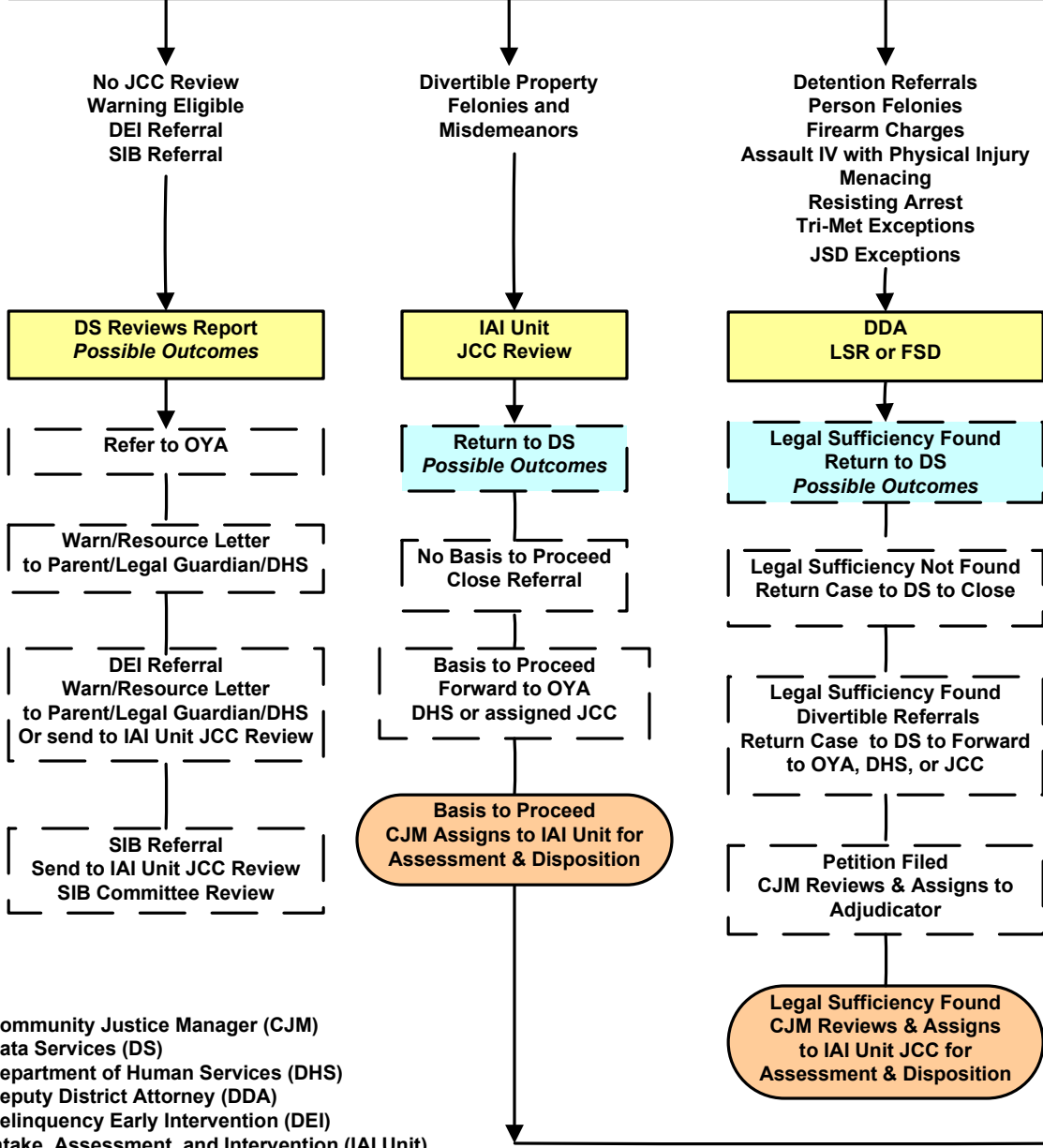
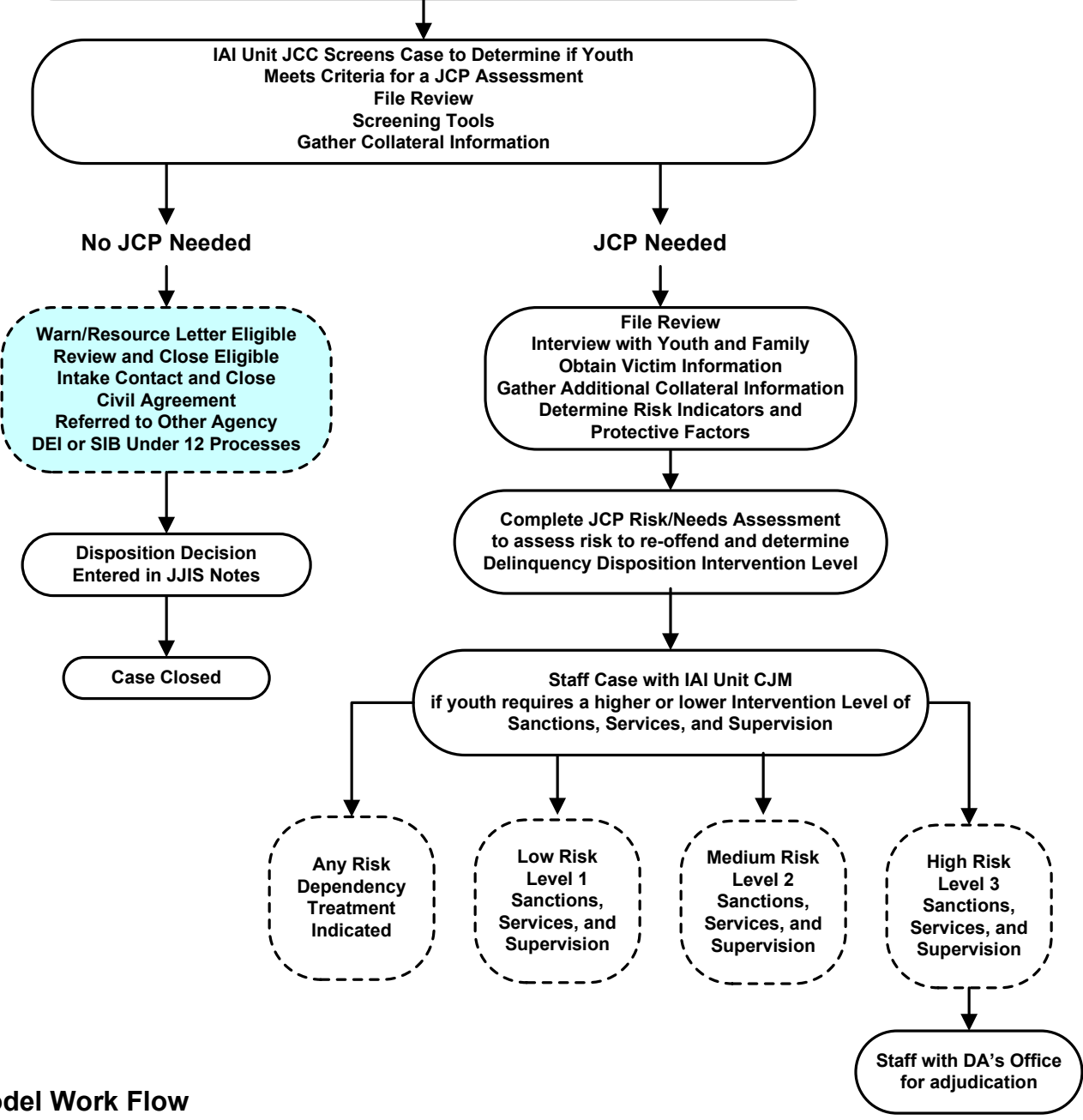


**Data Services Processes All Police Reports Received from Law Enforcement Agencies**  
 Reports are disposed of in Data Services, or forwarded to Intake, Assessment, and Intervention Unit or to the DA's Office for review



**The Intake, Assessment, and Intervention Unit makes an objective and valid determination as to the most appropriate case disposition needed to protect the community and hold a youth accountable**



Community Justice Manager (CJM)  
 Data Services (DS)  
 Department of Human Services (DHS)  
 Deputy District Attorney (DDA)  
 Delinquency Early Intervention (DEI)  
 Intake, Assessment, and Intervention (IAI Unit)  
 Juvenile Court Counselor (JCC)  
 Juvenile Crime Prevention (JCP)  
 Oregon Youth Authority (OYA)  
 Sexually Inappropriate Behavior (SIB)