

Addressing Disproportionate Minority Representation Within the Juvenile Justice System

Santa Cruz County Probation Department
Santa Cruz, California



Leadership

- Dedicate resources
- Staff recruitment
- Cultural competency plan
- Core work group
- Technical assistance



Decision Points

- Map key decision points
- Collect data by ethnicity
- Monitor data regularly
- Use data to improve process



SANTA CRUZ COUNTY DISPROPORTIONATE MINORITY DATA

- Court Aged Youth General Population
- Arrests / Citations
- Detention Center Bookings
- Detentions
- Average Daily Population
- Petitions Filed
- Detention Alternatives
- Success Rates – Detention Alternatives
- Length Of Stay
- Length Of Court / Placement Process
- Post Dispositional Programs
- Commitments To Institutions

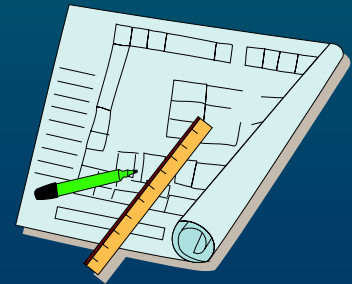
Objective Criteria For Decisions

- Risk based detention criteria
- Criteria for use of detention alternatives
- Criteria for use of intensive supervision
- Criteria for use of placement
- Monitor outcomes



Develop Full Continuum of Services

- Culturally competent
- Research-based
- Monitor access and outcomes
- Customer surveys



DMC Work Plan Checklist

- Stated administrative value
- Working group charged with outcomes and goals
- Cultural competence coordinator
- Regular cultural competence training
- Staff reflects bilingual, bicultural levels of client base
- Key positions have bilingual staff
- Key decision points mapped
- Data available for each decision point



DMC Work Plan Checklist

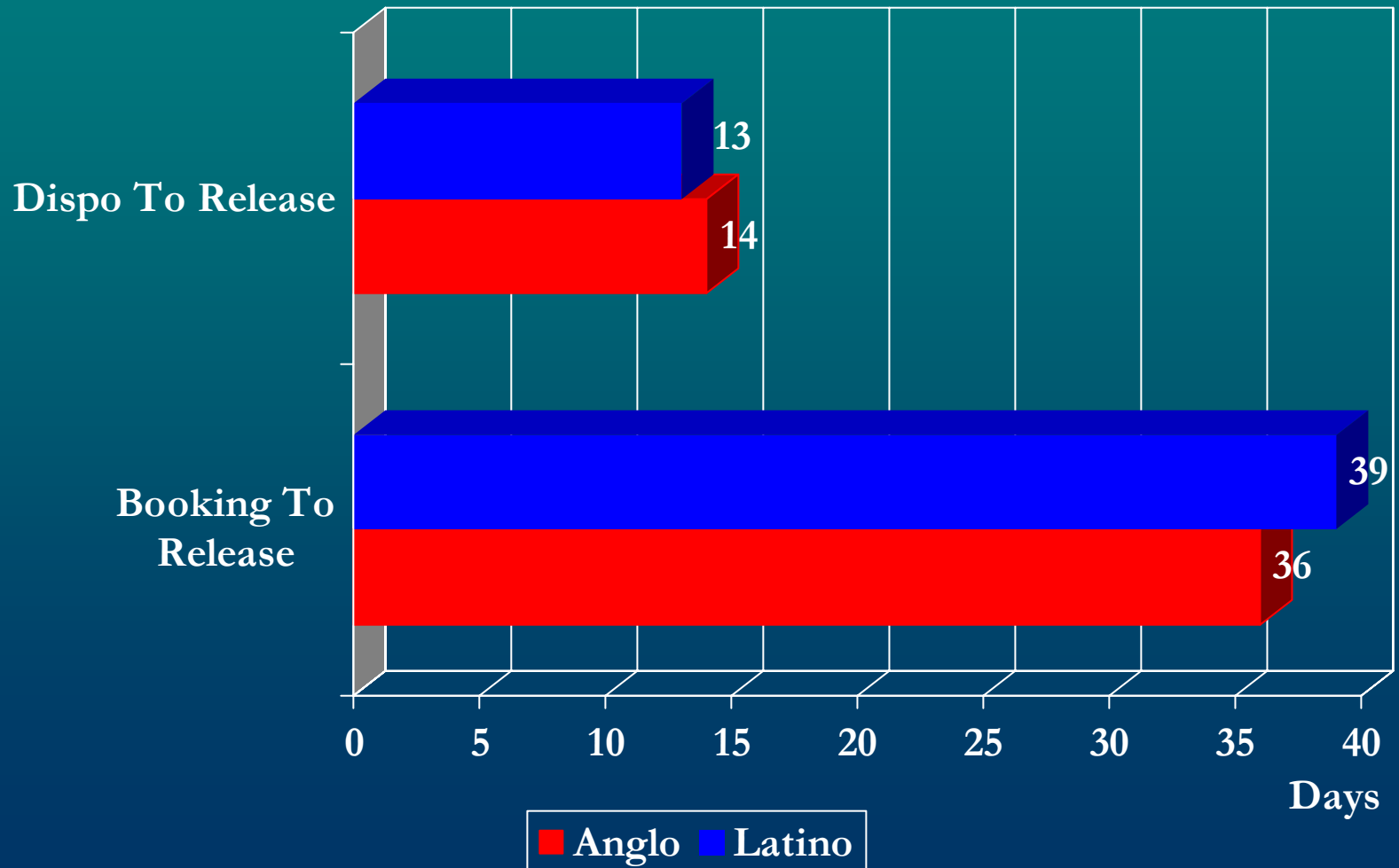
- Quarterly review of decision-point data (trends)
- Customer surveys identify service barriers
- Parental involvement at all levels
- Detention alternatives with community partners and more than one level of alternative
- Tracking outcomes of alternatives by ethnicity
- Risk-based detention criteria without racial bias
- Stakeholders involved in development of risk assessment instrument

DMC Work Plan Checklist

- Efficient court and placement system with short length of stay in detention-measure length of stay by ethnicity
- Clear criteria for assignment to intensive caseloads
- Clear criteria for removal from intensive caseloads
- Administrative sanctions for probation violations
- Sufficient diversion options
- Extensive graduated continuum of services with wraparound services and community partners
- Culturally competent residential programs

Average Length Of Stay 2009

All Youth Pending Placement



Map of Juvenile Justice Decision Points

Level I

Agency

Decision Points

Local law enforcement

Field deployment of personnel

Probation department

Intensive caseload assignments

Level II

Agency

Decision Points

Local law enforcement

Decision to warn or divert or Cite and release or Arrest

Probation department

If a probation violation:
Administrative sanction or arrest

Level III

Agency

Decision Points

Juvenile hall staff

Immediate release following booking or Hold for intake probation officer

Map of Juvenile Justice Decision Points

Level IV

Agency

Probation Intake

Decision Points

Release to parent/other agency *or* Release directly to home supervision *or* Hold in custody for detention hearing

Level V

Agency

District attorney

Decision Points

No file *or*

File *or*

Order further investigation

If petition is filed:

Decision re: type and number of offenses charged

Decision to recommend or oppose release to a detention alternative

Decision on plea agreements

Map of Juvenile Justice Decision Points

Level VI

Agency

Probation Department

Decision Points

At detention hearing:

Recommend or oppose detention alternatives

Recommend home supervision or electronic monitoring

Level VII

Agency

Public defender and defense advocates

Decision Points

Active only on legal aspects of defense *or*
Employs defense advocates to actively fashion release and dispositional plans with parents, relatives, and programs

Map of Juvenile Justice Decision Points

Level VIII

Agency

Decision Points

Court

Decision to release

Decision to utilize home supervision

Decision to utilize electronic monitoring

Decision on conditions of release

Decisions on extensions of jurisdictional time frames

Dispositional decisions

Decisions on probation violations

Level IX

Agency

Decision Points

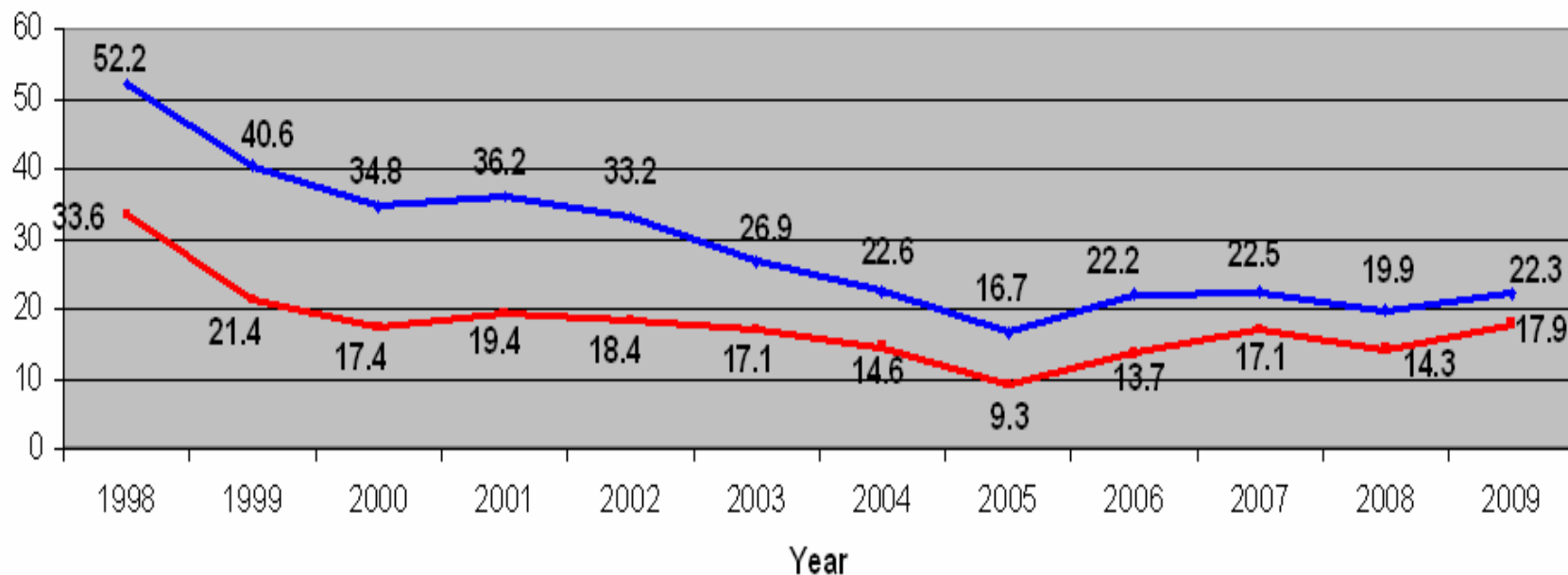
Probation Department

Placement and dispositional options

SANTA CRUZ COUNTY JUVENILE HALL LATINO YOUTH AVERAGE DAILY POPULATION 1998 - 2009

DISPROPORTIONATE MINORITY CONFINEMENT
SANTA CRUZ COUNTY JUVENILE HALL
1998 - 2009

Latino Compared to Overall Average Daily Population



	1998	1999	2000	2001	2002	2003	2004	2005	2006	2007	2008	2009
Juvenile Hall Capacity	42	42	42	42	42	42	42	42	42	42	42	42
% Of Latino Youth Detained	64.3%	52.9%	50.0%	53.6%	55.3%	63.5%	64.8%	54.8%	58.1%	64.0%	65.4%	75.5%
Juvenile Hall Average Daily Population	52.2	40.6	34.8	36.2	33.2	26.9	22.6	16.7	22.2	22.5	19.9	22.3
Latino Youth Juvenile Hall Average Daily Population	33.6	21.4	17.4	19.4	18.4	17.1	14.6	9.3	13.7	17.1	14.3	17.9

Results in Santa Cruz

- Latino youth – 33%, ages 10 – 17, 1997
- Detained – 64% Latino, 1997 and 1998
- Arrests/citations – 31% Latino, 1999
- Booked – 47% Latino, 2000
- Detained – 50% Latino, 2000
- Reduction of 14%



RESOURCES

- ANNIE E. CASEY FOUNDATION

- ✓ www.aecf.org

- ROBERT WOOD JOHNSON FOUNDATION

- ✓ www.reclaimingfutures.org

- JUDICIAL COUNCIL OF CALIFORNIA

- ✓ www.courtinfo.ca.gov/programs/cfcc/resources/publications/journal

- BUILDING BLOCKS FOR YOUTH

- ✓ www.buildingblocksforyouth.org