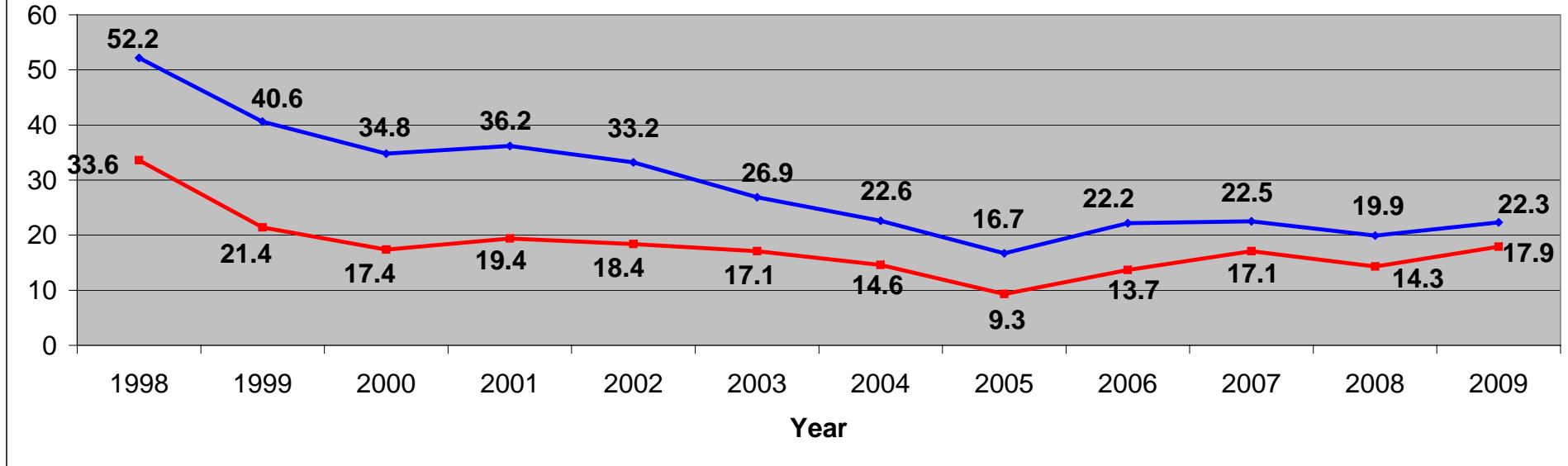


DISPROPORTIONATE MINORITY CONFINEMENT
 SANTA CRUZ COUNTY JUVENILE HALL
 1998 - 2009

Latino Compared to Overall Average Daily Population



	1998	1999	2000	2001	2002	2003	2004	2005	2006	2007	2008	2009
Juvenile Hall Capacity	42	42	42	42	42	42	42	42	42	42	42	42
% Of Latino Youth Detained	64.3%	52.9%	50.0%	53.6%	55.3%	63.5%	64.8%	54.8%	58.1%	64.0%	65.4%	75.5%
Juvenile Hall Average Daily Population	52.2	40.6	34.8	36.2	33.2	26.9	22.6	16.7	22.2	22.5	19.9	22.3
Latino Youth Juvenile Hall Average Daily Population	33.6	21.4	17.4	19.4	18.4	17.1	14.6	9.3	13.7	17.1	14.3	17.9